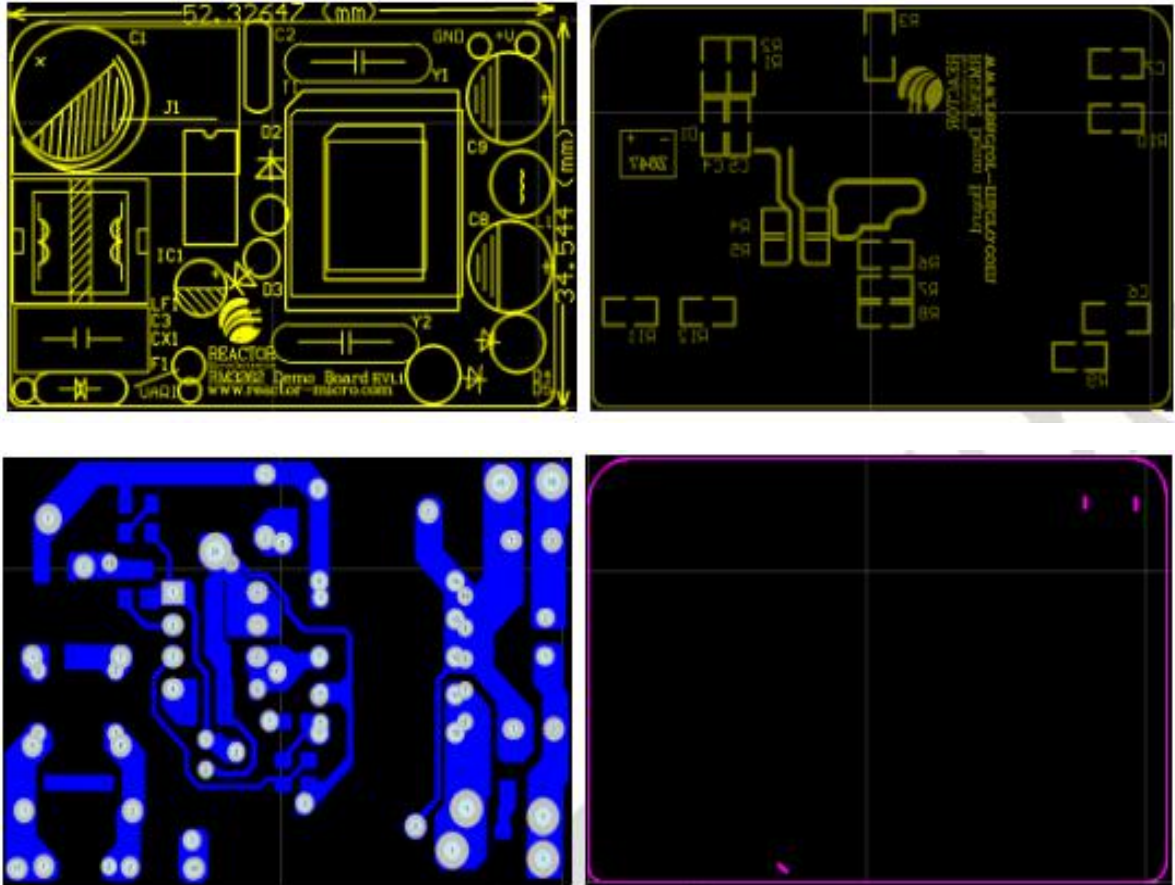


BOM of the system:

No	Component	Specification Models	Amount	Location number	Packaging Requirements
1	Fuse	250V,1.0A	1	F1	DIPΦ3*10mm
2	SMD Resistor	1MΩ,0.25W,±5%	2	R1 R2	SMD0805
3	SMD Resistor	75KΩ,0.125W,±5%	1	R3	SMD0805
4	SMD Resistor	2.0Ω,0.25W,±5%	1	R4	SMD1206
5	SMD Resistor	2.0Ω,0.25W,±5%	1	R5	SMD1206
6	SMD Resistor	10Ω,0.125W,±1%	1	R6	SMD0805
7	SMD Resistor	43KΩ,0.125W,±1%	1	R7	SMD0805
8	SMD Resistor	3.75KΩ,0.125W,±1%	1	R8	SMD0805
9	SMD Resistor	22Ω,0.125W,±5%	1	R9	SMD0805
10	SMD Resistor	1.2KΩ,0.125W,±5%	1	R10	SMD0805
11	SMD Resistor	1.5MΩ,0.125W,±5%	2	R11 R12	SMD0805
12	Electrolytic Capacitor	22μF,400V,±10%	1	C1	DIPΦ13*21mm
13	Dacron Capacitor	2.2nF,1KV,X5R,±10%	1	C2	DIP
14	Electrolytic Capacitor	3.3μF,50V,±10%	1	C3	DIPΦ4*8mm
15	SMD Resistor	10nF,50KV,X5R,±10%	1	C4	SMD0805
16	SMD Resistor	1nF,200V,X5R,±10%	1	C6	SMD1206
17	Electrolytic Capacitor	1000μF,16V,±10%	2	C8 C9	DIPΦ8*15mm
18	Y Capacitor	1nF,1KV,±20%	1	CY1	DIP
19	Common mode Choke	18mH,±10%	1	FL1	UU9.8
20	DM Inductance	3μH,3A,±10%	1	L1	DIPΦ3*16mm
21	Rectifier Bridge	MB10S	1	D1	SMD
22	Diode	FR107,1A,1KV	2	D2 D3	D0-41
23	Diode	SR3100,3A,100V	1	D4	D0-27
24	IC	RM3272D	1	U1	DIP-8
25	Transformer	EE19, horizontal 5+5	1	T1	
26	PCB	52mm*34mm*1.6mm			

PCB:



DEMO:

